

A modern glass building with a wireframe overlay. The building is multi-storied and features large glass panels. The wireframe is a black metal structure that follows the outline of the building, highlighting its geometric form. The building is set against a light blue sky with soft clouds. The foreground shows a paved area and a small tree. The overall scene is a digital rendering of a contemporary architectural design.

Union Glass Centres

Adding Class to Glass

Glass opens endless opportunities in transforming spaces within the home, both aesthetically and functionally.



Glass creates an illusion of more space and allows outside features to become part of the interior design. With glass it is possible to link two different spaces together without the barrier of a wall giving you the ability to enjoy your home and garden throughout the year.

Glass is extremely durable and can maintain its beauty among the worst environmental factors. With very little maintenance, glass will maintain its elegance for many years to come.

One of the obvious benefits of glass in architectural design is its ability to allow natural light throughout the space. A well-lighted space has been proven to improve our psychological well-being.

We are committed in our belief to supply the best products available on the market, at competitive

prices. The products within this brochure have been carefully selected with a view of improving your living space, both indoors and outdoors.

We will offer technical advice to ensure that we only offer the correct solution for your home.

All products shown in this brochure have been subject to industry standards, passing any relevant certification.

Index

Glass Balustrades

Frameless Systems	6
Balustrade Posts	8
Glass Spigots	10
Point Fixings	12
Glass Clamps	14

Juliet Balconies

Rail Design	18
Framed Design	20
Button Design	22

Shower Enclosures & Wetrooms

Frameless Systems	26
Sliding Door Systems	28
Glazing Channels	29
Accessories	30

Glass Canopies

Floating Canopies	34
Arcade Canopies	35







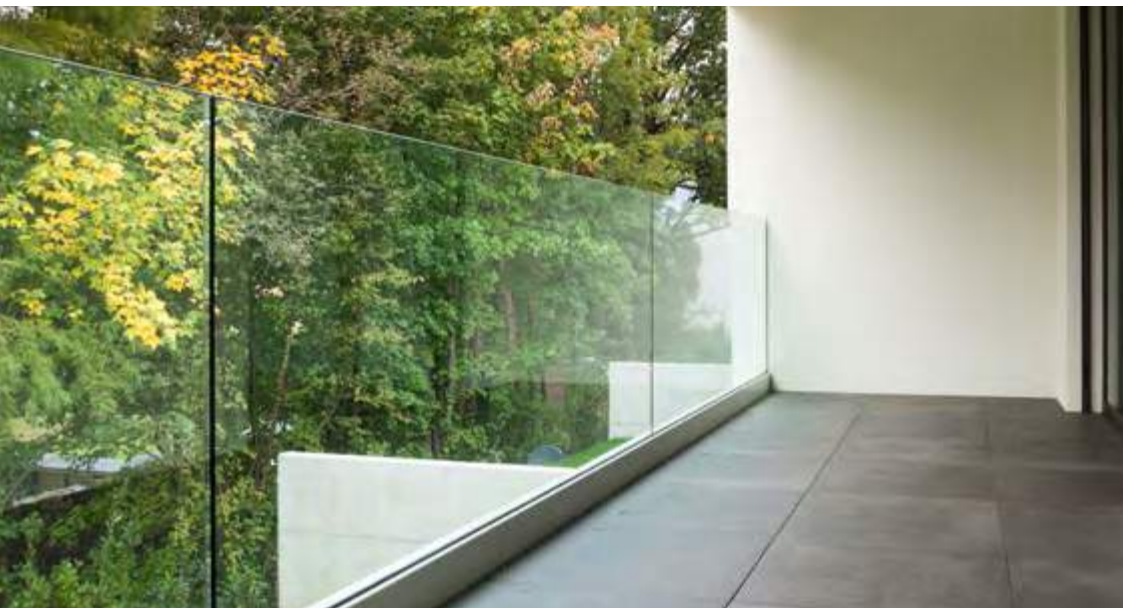
Glass Balustrades

First and foremost, a balustrade must act as a barrier. With this in mind you can rest assured that all of our products are certified to the relevant test standards within the construction industry.

Our range of carefully selected products offer different design choices, each having their own unique characteristics. Our range can be utilised around the home, both indoors and outdoors including coastal environments.

Every choice will improve your living space, and well-being, while adding value to your home.





Frameless Systems

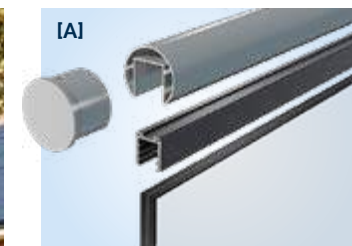
This contemporary design safely maximises the view, allowing natural light to spread across the living space.

This solution can be used for internal stairs, external balconies, or to act as windbreaks in exposed areas outdoors.

Various profiles, including top-mounted and side-fixed glazing options, are available to suit the requirements of the project.

A handrail is not always required, depending on your chosen glass thickness, but can be supplied if preferred. Manufactured in brushed high quality, durable stainless steel to match the bottom channel. **[A]**

Panel Supports, whilst not mandatory, can assist with stability in areas which may be exposed to extremely high winds. **[B]**





Balustrade Posts

A classic, yet still very popular, design choice.

Very often used in outdoor spaces such as balconies or gardens, they can of course, be utilised internally for stairs and landings.

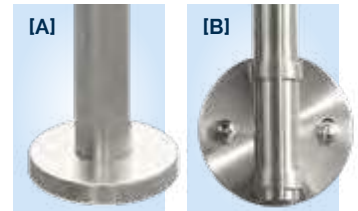
Manufactured using 2.6mm thick walled, 48mm stainless steel for superior strength. This high quality, external grade steel maximises durability and minimises maintenance.

Fixing holes are flow drilled to ensure superior fastening strength between the post and the glass clamp.

Our stainless steel pre-assembled balustrade posts are supplied as standard at 1100mm high although bespoke heights are available. Available in top fixed **[A]** or side fixed **[B]** options.

Magnetic and lockable glass gate hinges are also available. **[C]**

Posts can also be capped for designs that do not include a handrail **[D]** or include brackets for easy installation of handrail. **[E]**



Finishes Available

Brushed Satin





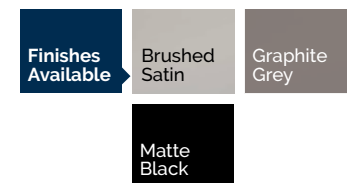
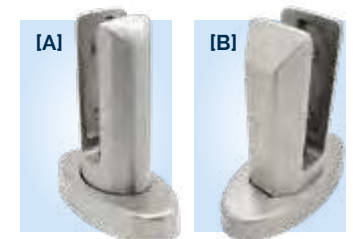
Glass Spigots

A modern, minimalist design choice which maximises your view.

Glass spigots are a large glass floor clamp that secures the glass vertically. The individual 'feet' allow for natural drainage making it an ideal choice for external areas including patio, and decked gardens, as well as poolside areas.

Manufactured in Duplex 2205 steel which is extremely corrosion resistant.

Available in oval [A], or square shaped design [B].
Spig-Lite design also available [C].





Point Fixings

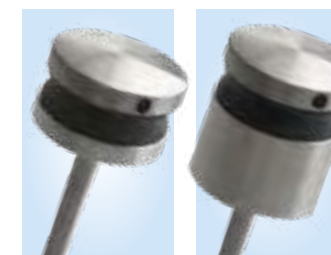
A versatile product that can be used throughout the home, internally or externally.

Its subtle design allows the glass itself to become the focal point of the staircase or balcony.

These small, but strong components allow the glass to safely protrude from the stair treads, securing the glass panel into place whether it be to wood, steel, stone or concrete.

All products within the range are manufactured using high quality steel and have been approved for use in glass staircases and balconies.

Various diameters and stand-off depths are available to ensure that a tailored solution is supplied.



Finishes Available **Brushed Satin**







Glass Clamps

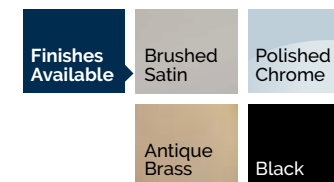
Glass Clamps are widely used for internal staircase refurbishments and to install glass into external decking.

This design choice can quickly and economically modernise your home, giving the feeling of additional space.

These strong, durable fittings can easily be fitted to new or existing timber posts, handrails, and base rails. The glass is firmly secured into place using rubber gaskets, specific to the glass thickness used, for a perfect fit.

Multiple glass thicknesses and types can be used to suit your requirements.

Available in square shaped **[A]** or D-shaped **[B]** designs.







Juliet Balconies

A Juliet Balcony is used externally, usually outside a window or pair of French doors on the upper storey of a building.

Their purpose is to give the appearance of a full balcony in locations where it may not be possible or suitable to install a larger feature.

Our range of products offers a wide range of design choices, each of which hold certification to the highest of standards.



Rail Design

This robust balcony system can be installed on openings up to 1800mm wide.

Safety can be ensured due to it being manufactured using exceptionally strong 1.5mm thick walled, 48mm Stainless Steel Tube.

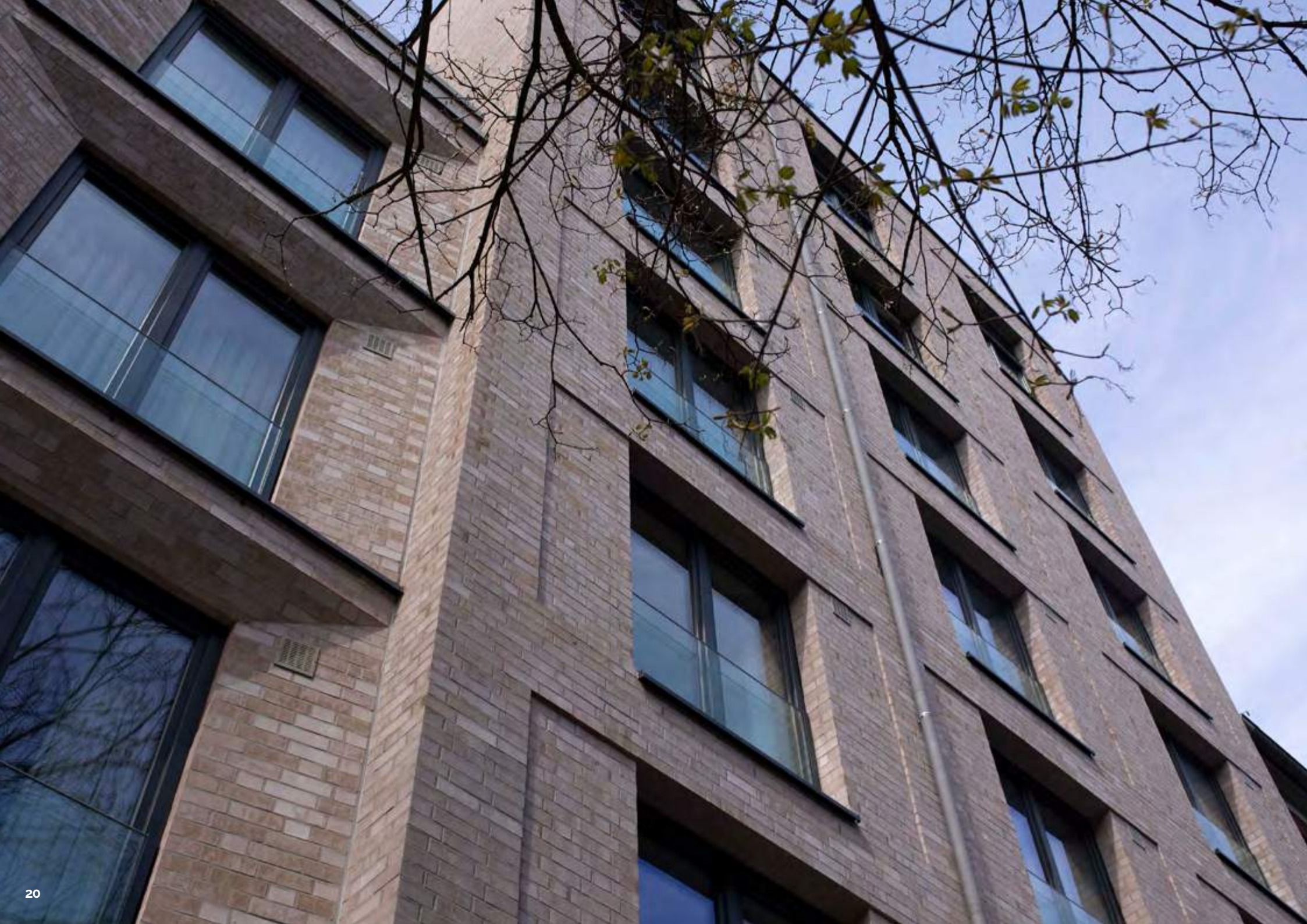
Designed for easy installation, this high quality, external grade steel guarantees the longevity of the product.

The stylish circular profile secures the edge of the glass against the building, with minimal visual interference.

The system can be mounted vertically or horizontally to match your preferred design choice.



Finishes Available **Brushed Satin**





Framed Design

The super slim profile makes this one of the most attractive products on the market.

It is suitable for mounting onto plastic, aluminium, wooden, or metal frames as well as concrete or stone. Thanks to the unique technology, installation can even be performed directly on the window frame or masonry.

Certified to be used up to a maximum width of 3000mm*

Available in face-fixed or side-fixed option.

*Subject to glass thickness



Finishes Available	Anodised	Anthracite Grey
	Pure White	Mill
	Black	Bespoke Colours Available on request



Button Design

Our range of point fixings have also been certified for use with juliet balconies.

The minimalist, yet structurally secure design, offers unobstructed views whilst maintaining the high safety standards needed.

This solution can be designed so that it is not subject to maximum widths, boosting the opportunity for spacious openings.

Available in various stand-off depths, from 10mm to 50mm, ensures that we can position the glass to the required the distance from the wall.

Manufactured using 316 external grade steel, making them robust against the worst of climates.



Finishes Available

Brushed Satin







Shower Enclosures and Wetrooms

A well designed bathroom space can add value to our day to day lives, and also add value to your property.

Not only can it bring aesthetic and financial benefits, but also practical assistance such as providing increased accessibility, less maintenance, etc.

Renovating your bathroom space can also be good for your well-being, giving you a relaxing oasis to start and end your day. Maximising the use of glass will also help natural light to illuminate your bathroom.

Our range of high quality fittings can be used to design enclosures to suit the space available, big or small.





Frameless Systems

This contemporary and minimalist design choice is extremely popular.

The unobstructed subtle design, results in an increased sense of space, maximising sightlines to important design choices such as tiling and splashbacks.

Multiple product designs are available, the most popular being Shannon [A], Shannon SQ [B] and Amazon [C]. Each of these hinge ranges enjoy their own benefits; the Shannon and Shannon SQ hinges can hold a weight of 45kg per pair, while the Amazon is engineered with winged caps that hide the fixing screws.



Finishes Available	Satin Chrome	Polished Chrome
	Polished Gold	Antique Brass
	Brushed Nickel	Matte Black



Sliding Door Systems

Sliding Shower Enclosures integrate well with virtually any bathroom.

Our robust, and minimalistic hardware options provide a frameless, 'floating' appearance and manufactured to the highest standard.

Multiple installation solutions are available including wall-to-wall, glass-to-glass or wall-to-glass.

The moving mechanisms allow for a smooth, quiet, and safe opening and closing of the doors.



Finishes Available

Satin Chrome

Polished Chrome

Matte Black



Glazing Channels

An economic solution to renovating your shower enclosure.

Most commonly used for mounting shower screens to the floor, wall, or bathtub without the need to drill glass.

They act as an intermediate between the mounting substrate and the glass panel.

Its size normally replicates the full length and width of the glass. The glass is usually held in place with silicone sealant, although a dry glaze option is available.

Multiple channel depths are available to suit the glass thickness required.

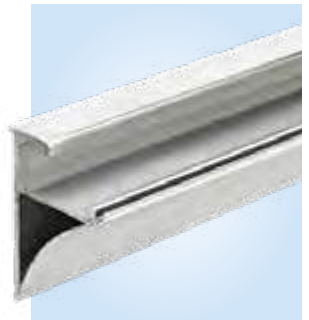


Finishes Available	Anodised Aluminium	Brushed Nickel	Polished Chrome	Polished Gold
	Antique Brass	Alinox	Black	

| Demista Pads



| Shelving Brackets



| Door Handles & Door Knobs



| Mirror Fixings



Accessories

For those finishing touches to your bathroom, we have all that you need.

Demista Pads

Steamed-up bathroom mirrors were always accepted as an everyday problem that couldn't be solved...until the introduction of Demista.

Our Demista pad technology will ensure that your mirror remains crystal clear. We can provide various sizes of mirrors to suit your space, pre-prepared with the pads applied to the rear the mirror.

Shelving Brackets

Suitable for use around the home, including the bathroom. Available in multiple design options, our range of shelving brackets can be utilised for both practical and decorative purposes.

Door Handles & Door Knobs

If you are looking for a shower door handle, we have plenty of styles and colours available.

Mirror Fixings

Finishing touches are important. Our range of fixings ensure that your mirrors are securely fastened to the wall.

Towel Bars

Available in various sizes and easy to install.





Glass Canopies

Upgrading the entrance to your home will add to the curb appeal of your house. Glass canopies offer practical solutions with a modern day design.

Our products will protect the doorway of the building from rain, protecting visitors and householders from getting wet while unlocking the door. They can also increase the lifespan of the front door and frame itself.

Our range of canopies are also regularly used above patio doors, allowing you to keep the doors open no matter the weather.



Floating Canopies

Using the most advanced products on the market, our range of horizontal cantilever canopies offer both beauty and practicality.

Designed and tested to withstand snowfall, high winds, and impact.

The sleek, yet strong, aluminium profile can even hold LED strip lighting should you like the canopy to be illuminated.

Available in various widths up to 3000mm, with a maximum projection of 1000mm

Supplied in a brushed stainless steel like finish





Bolted Canopies

A frameless glass canopy supported by strong tie rods and fixings.

Designed and tested to withstand snowfall, high winds, and impact.

When fitted, the canopy has a gentle slope to aid water run-off at the front end.

Available in various widths up to 3400mm, with a maximum projection of 2000mm.

Supplied in brushed satin finish, Marine Grade 316 Stainless Steel.



Union Glass Centres

T - 01752 664418

Sales@unionglass.co.uk

2 Market Cl, Stonehouse, Plymouth PL1 3SY

www.unionglass.co.uk

All images portrayed in this brochure should not be reproduced without specific written permission from GlassParts UK Ltd.
Images, designs and finishes are for illustrative purposes only and may differ when manufactured. We reserve the right to amend or
withdraw any products within this brochure without prior notice. Finishes shown in this brochure should be used for guidance only.
Copyright GlassParts UK Ltd © 2023